

Spring 2025 Computer-Based Statewide Assessments

Grades 3–10 FAST ELA Reading, Grades 3–8 FAST Mathematics,
B.E.S.T. Writing, Statewide Science, and EOC Assessments

Progress Monitoring vs. Summative

- FAST Progress Monitoring #3 is summative
 - PM #1 in September
 - PM #2 in December
 - PM #3 in May is a high stakes test
- End of Course Exams are high stakes tests
 - 30 % of course grade
 - Algebra, Geometry, Civics, Biology
- Statewide Science Assessment is a high stakes test
 - Material from 6th to 8th grade

How are the results used?

- EOCs count in the final grade for the course
- FAST data is used to determine course placement
 - Advanced courses
 - Intensive Reading
- Test scores are used to determine:
 - School grades

Goal sheet

R.J. MURRAY MIDDLE SCHOOL

Parent/Student Data Chat Form

Student Name: _____ Grade: _____

FAST Data – ELA			POINTS TO NEXT LEVEL	
	Scale Score	Level	For Gains	For Proficiency
PM3 2023-24				
PM1 2024-2025				
PM2 2024-2025				

FAST Data – MATH			POINTS TO NEXT LEVEL	
	Scale Score	Level	For Gains	For Proficiency
PM3 2023-24				
PM1 2024-2025				
PM2 2024-2025				

Goal sheet

FAST English Language Arts										
Grade	Level 1	Level 1 Low	Level 1 Middle	Level 1 High	Level 2	Level 2 Low	Level 2 High	Level 3	Level 4	Level 5
3	140-185	140-155	156-170	171-185	186-200	186-193	194-200	201-212	213-224	225-260
4	154-198	154-168	169-183	184-198	199-212	199-205	206-212	213-223	224-236	237-270
5	160-205	160-175	176-190	191-205	206-221	206-213	214-221	222-231	232-245	246-279
6	161-208	161-176	177-192	193-208	209-224	209-216	217-224	225-236	237-249	250-284
7	165-214	165-181	182-198	199-214	215-231	215-223	224-231	232-241	242-256	257-292
8	169-219	169-185	186-202	203-219	220-237	220-228	229-237	238-250	251-261	262-300
9	174-223	174-190	191-207	208-223	224-241	224-232	233-241	242-253	254-266	267-303
10	179-229	179-195	196-212	213-229	230-246	230-238	239-246	247-257	258-270	271-308

FAST Mathematics										
Grade	Level 1	Level 1 Low	Level 1 Middle	Level 1 High	Level 2	Level 2 Low	Level 2 High	Level 3	Level 4	Level 5
3	140-182	140-154	155-168	169-182	183-197	183-190	191-197	198-208	209-224	225-260
4	155-199	155-169	170-184	185-199	200-210	200-205	206-210	211-220	221-237	238-273
5	158-206	158-174	175-190	191-206	207-221	207-214	215-221	222-233	234-245	246-285
6	168-212	168-182	183-197	198-212	213-228	213-220	221-228	229-238	239-253	254-287
7	175-222	175-190	191-206	207-222	223-234	223-228	229-234	235-246	247-257	258-288
8	183-226	183-197	198-212	213-226	227-243	227-235	236-243	244-253	254-262	263-291

B.E.S.T. Algebra and Geometry EOCs										
Subject	Level 1	Level 1 Low	Level 1 Middle	Level 1 High	Level 2	Level 2 Low	Level 2 High	Level 3	Level 4	Level 5
Algebra	325-378	325-342	343-360	361-378	379-399	379-389	390-399	400-417	418-434	435-475
Geometry	325-384	325-344	345-364	365-384	385-403	385-394	395-403	404-422	423-431	432-475

8th grade Testing Dates

- Tuesday, April 1st – Writing
- Writing makeups through April 11
- Thursday, May 1st – ELA FAST CBT
- Tuesday, May 6th – Civics EOC CBT
- Thursday, May 8th – Science/Biology EOC CBT
- Tuesday, May 13th – Alg/Geo EOC CBT
- Thursday, May 15th – Math FAST
- FAST and EOC makeups through May

7th grade Testing Dates

- Tuesday, April 1st – Writing
- Writing makeups through April 11
- Thursday, May 1st – ELA FAST CBT
- Thursday, May 8th – Science/Biology EOC CBT
- Tuesday, May 13th – Alg/Geo EOC CBT
- Thursday, May 15th – Math FAST
- FAST and EOC makeups through May

6th grade Testing Dates

- Tuesday, April 1st – Writing
- Writing makeups through April 11
- Thursday, May 1st – ELA FAST CBT
- Thursday, May 15th – Math FAST
- FAST and EOC makeups through May

General Info - Writing

- Students will read three passages and then type an essay in response to a prompt
- 120 minute test
- All students can have an additional hour to work if necessary

General Info - FAST

- Computer Adaptive Tests
 - Math- Approximately 40-45 questions
 - Calculators provided
 - Reference sheets provided
 - ELA- Approximately 43-47 Questions
 - Scratch paper available
- 120 minute test
- All students can work all day if necessary

General Info - EOCs

- Computer Adaptive Tests
 - Algebra & Geometry (48-50 questions)
 - Reference sheets provided
 - Calculators provided
 - Civics (50 questions)
 - Biology (51 questions)
 - Periodic table provided
 - Calculators provided
- 160 minute test
- All students can work all day if necessary

General Info – Science

- Computer Adaptive Test
 - Science
 - 51 questions
 - Periodic Table provided
 - Calculators provided
- 160 minute test
- All students can work all day if necessary

Reporting Updates

- Student results will be reported very soon after the test is completed for the following assessments:
 - Cambium (reading and math)
 - B.E.S.T. EOCs (Algebra, Geometry, Civics, Biology)
 - Science SSA
- Writing results will be available by June 30th

How to Prepare

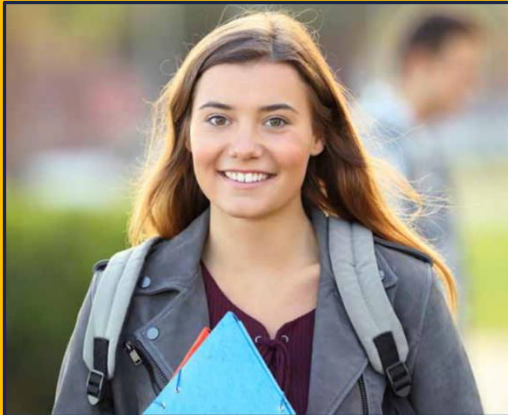
- Be on time to school
- Get enough sleep
- Eat a good breakfast
- Don't schedule appointments for testing days
- Stay home if you're sick



How to Prepare

- Teachers are preparing in class
 - Review assignments
- Portal– flfast.org
 - Practice tests
 - Testing information
- www-mms.stjohns.k12.fl.us
 - Testing page

Welcome to the Florida Statewide Assessments Portal



Florida Statewide Assessments

FAST, B.E.S.T., Science, and Social Studies assessments



Florida Alternate Assessments (FAA)

Alternate Assessments aligned to Access Points in ELA, Mathematics, Science, and Social Studies.



ACCESS for ELLs

Measures English Language Learners (ELLs) proficiency in the English language.



NAEP

NAEP is a nationally recognized continuing assessment of what America's students know and can do.

Welcome to the Florida Statewide Assessments Portal

Your source for information about the Florida Assessment of Student Thinking (FAST), Benchmarks for Excellent Student Thinking (B.E.S.T.) End-of-Course (EOC) and Writing Assessments, Science and Social Studies Assessments, and the Florida Civic Literacy Exam (FCLE).



Students & Families



**Teachers & Test
Administrators**



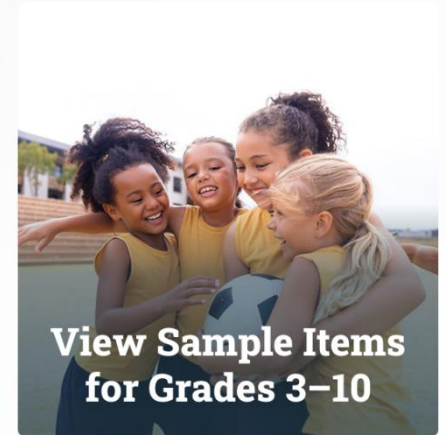
**Assessment &
Technology Coordinators**

Prepare for Testing

Select the appropriate link to the right to view sample items for VPK–2, FAST Grades 3–10, B.E.S.T., Science, and Social Studies.

[!\[\]\(3dfb8d66e81160ad61421a3452093d1b_img.jpg\) Testing Information for VPK at FLDOE.org](#)

[!\[\]\(99f58673407353e96a019fbca558fd72_img.jpg\) Testing Information for Grades K–2](#)

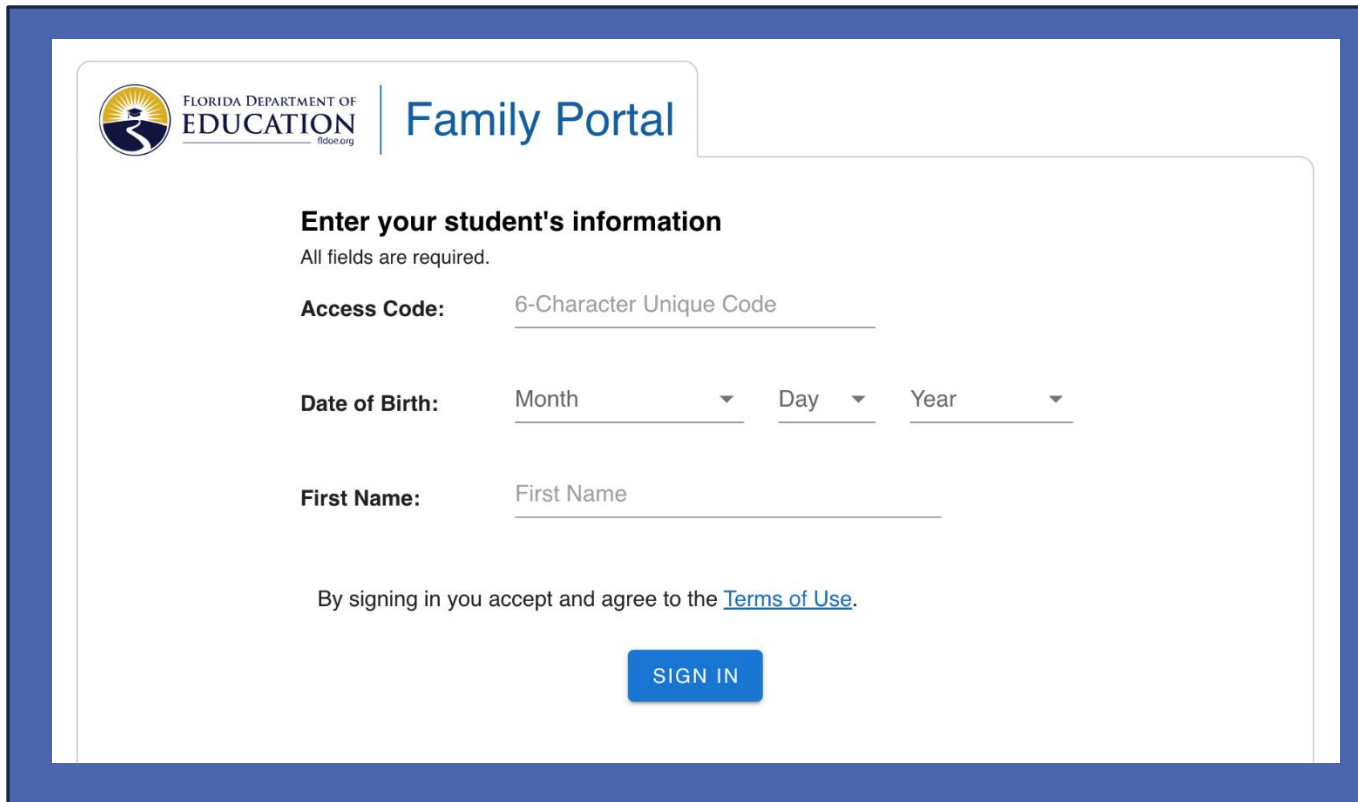


Resources for Students & Families

- [FDOE B.E.S.T. Assessment Resources](#)
- [2024–2025 Florida Assessment of Student Thinking \(FAST\) Fact Sheets](#)
- [Understanding Florida Statewide Assessments Reports for Families](#)
- [Family Portal](#)

Scores

- Family Portal – flfast.org



The screenshot shows the login interface for the Florida Department of Education's Family Portal. At the top left is the Florida Department of Education logo, which includes a stylized sun and a path leading to a graduation cap, with the text "FLORIDA DEPARTMENT OF EDUCATION" and "fldoe.org" below it. To the right of the logo is the text "Family Portal" in a blue font. Below this is a section titled "Enter your student's information" with a sub-note "All fields are required." The form contains four input fields: "Access Code:" with a placeholder "6-Character Unique Code" and a text input field; "Date of Birth:" with three dropdown menus for "Month", "Day", and "Year"; "First Name:" with a placeholder "First Name" and a text input field. At the bottom of the form is a blue button labeled "SIGN IN". Below the form, there is a line of text: "By signing in you accept and agree to the [Terms of Use](#)."



HAC



Calendar



Payments

Search this website



Clever – Links for Students

Testing Information

Testing Information

[Access Your Child's Scores - Family Portal](#)

[2024-2025 Testing Schedule](#)

[Volunteer to Proctor](#)

Upcoming Testing Dates

Tuesday, April 1st – BEST Writing

Thursday, May 8th – Biology EOC, Science SSA

Thursday, May 1st – ELA Reading FAST PM #3

Tuesday, May 13th – Algebra & Geometry EOC

Tuesday, May 6th – Civics EOC

Thursday, May 15th – Math FAST PM #3



HAC



Calendar



Payments

Search this website



Clever – Links for Students

Testing Information

SJCCA

Cambridge

Testing Information

[Access Your Child's Scores - Family Portal](#)

[2024-2025 Testing Schedule](#)

[Volunteer to Proctor](#)

Upcoming Testing Dates

Tuesday, April 1st – BEST Writing

Thursday, May 1st – ELA Reading FAST PM #3

Tuesday, May 6th – Civics EOC

Thursday, May 8th – Biology EOC, Science SSA

Tuesday, May 13th – Algebra & Geometry EOC

Thursday, May 15th – Math FAST PM #3

We need proctors!

Proctoring an exam is easy, and it is a huge help to our staff! You would be helping our teachers oversee students as they test. Since family members are not allowed in the same room as their child who is testing, you will not proctor in your child's room. Follow the steps below to help us with proctoring:

1. Be sure you are an approved volunteer with St. Johns County. If you are not, please visit <https://www.stjohns.k12.fl.us/volunteer/>.
2. Click [here](#) to sign up.
3. View the training presentation [here](#).
4. We will contact you before the test to verify your placement.
5. Sign the required form as shown in the training presentation. You can download a copy [here](#) or sign it when you arrive for proctoring.

Proctors are needed to help testing run smoothly and we are so thankful for your help!

If you have any questions, please contact Ms. Brailsford at Dawn.BrailsfordMoretta@stjohns.k12.fl.us



FLORIDA DEPARTMENT OF
EDUCATION
fldoe.org

Spring 2023 Statewide Assessments Policies and Procedures

Communicate the Following Testing Policies to Parents/Guardians and Students

- **Electronic Devices Policy**—Electronic devices are not permitted during testing and violation of this is grounds for test invalidation.
- **Leaving Campus**—If students leave campus before completing a test session (e.g., for lunch, an appointment, etc.), they **will not** be allowed to return to that session.
- **Testing Rules Acknowledgment**—All statewide tests include a statement that students sign/confirm verifying that they will abide by the testing rules.
- **Discussing Test Content after Testing**—By signing the Testing Rules Acknowledgment, students also affirm that they will not discuss or reveal details about the test content (including test items, passages, and prompts) after the test.

***While students may not share information about secure test content after testing, this policy is not intended to prevent students from discussing their testing *experiences* with their parents/families.**



Cell phones or
smartphones



Smartwatches



Handheld
video games
and tablets



Cameras



Bluetooth/
wireless
headphones/
earbuds

Communicate the Following Testing Policies to Parents/Guardians and Students

- **Working Independently**—Students are responsible for doing their own work during the test and for protecting their answers from being seen by others. If students are caught cheating during testing, their tests will be invalidated. In addition, FDOE employs Caveon Test Security to analyze student test results to detect unusually similar answer patterns. Students' tests within a school that are found to have extremely similar answer patterns will be invalidated.



FLORIDA DEPARTMENT OF
EDUCATION
fldoe.org



Questions?